



Government of Samoa

## **OFFICE OF THE MINISTER**

### **MINISTRY OF WORKS, TRANSPORT AND INFRASTRUCTURE**

(ELECTRIC POWER CORPORATION, SAMOA WATER AUTHORITY,  
SAMOA AIRPORT AUTHORITY, SAMOA PORTS AUTHORITY,  
SAMOA SHIPPING CORPORATION, TRANSPORT CONTROL BOARD, HOUSING COMMITTEE)

---

1<sup>st</sup> September 2011

**The Honourable Speaker  
Parliament**

Pursuant to the requirements of the Ministerial and Departmental Arrangements Act 2003, I submit for presentation to Parliament the Annual Report of the Ministry of Works, Transport & Infrastructure for fiscal year July 2009- June 2010.

With respect,

A handwritten signature in blue ink, appearing to read 'Manualesagalala Enokati Posala'.

Manualesagalala Enokati Posala.

**MINISTER OF WORKS, TRANSPORT & INFRASTRUCTURE**

# **TABLE OF CONTENT**

	<b>Page(s)</b>
<b>FOREWORD</b>	<b>(ii)</b>
<b>ACRONYMS</b>	<b>(iii)</b>
<b>CIVIL AVIATION DIVISION</b>	<b>1-5</b>
<b>MARITIME DIVISION</b>	<b>6-11</b>
<b>ASSET MANAGEMENT BUILDING DIVISION</b>	<b>12-15</b>
<b>LAND TRANSPORT DIVISION</b>	<b>16</b>
<b>CORPORATE SERVICES DIVISION</b>	<b>17-25</b>

# Foreword

2009/2010 was a year of considerable change, activity, challenge and achievement for the Ministry. The Government's main focus is on raising Samoa's economic growth and productivity and the Ministry makes a significant positive contribution towards achieving these goals through its commitment to lifting performance and improving our frontline services to the public, in line with Government priorities for public sector agencies.

I therefore take pleasure in presenting this Annual Report which encapsulates the activities that were implemented, key achievements, financial summaries as well as the challenges and recommendations for the way forward of the Ministry.

Succinctly, the Ministry's highlights for the year are as follows :

- Despite the difficult economic conditions Government's investment in Polynesian Blue resulted in a substantial \$1.5million (NZ\$880,000) net profit for the financial year ended June 2009.
- On 1 July 2009, Fagali'i Airport reopened after its closure 4 years ago with the international flights from American Samoa serviced only by Polynesian Airlines.
- The Apia Floodway and Drainage Improvement Project commenced in July 2009 to address frequent flooding during heavy rainfall and inadequate drainage systems in the urban area.
- The milestone separation of Land Transport Authority from the Ministry to its offices at Vaitele to perform the operational services of road developments eventuated in July 2009.
- On 21 August 2009, Aleipata New Wharf and Slipway was opened with a view to provide economic benefits and quicker travel.
- Government's unequivocal commitment to implement the Road Switch was realized on the 7 September 2009.
- The Tsunami of 29 September 2009 which caused colossal damage to many villages were aided by speedy rescue and recovery efforts delivered by the Government with considerable support from its key stakeholders and development partners. The Minister co-ordinated the implementation of the Tsunami Shelter Recovery Programme which provided assistance for 862 families - 161 funded through Donors and 681 funded through Government
- In March 2010, the new ferry MV Lady Naomi III granted by the Japanese Government officially commenced servicing Savaii-Upolu travellers.

In conclusion, I would like to thank all our key stakeholders and partners who played an active and constructive role with us in shaping these significant changes, while meeting Government's needs for good quality transport and infrastructure developments. The Hon. Minister Tuisugaletaua Sofara Aveau's leadership and passion to drive the implementation of Government's priorities is also acknowledged with appreciation.

Last but not least, I would also like to thank the staff, Consultants and the Executive Management for their flexibility, hard work and collaborative commitment over the past year.



Vaaelua Nofu Vaaelua

**CHIEF EXECUTIVE OFFICER**

# ACRONYMS

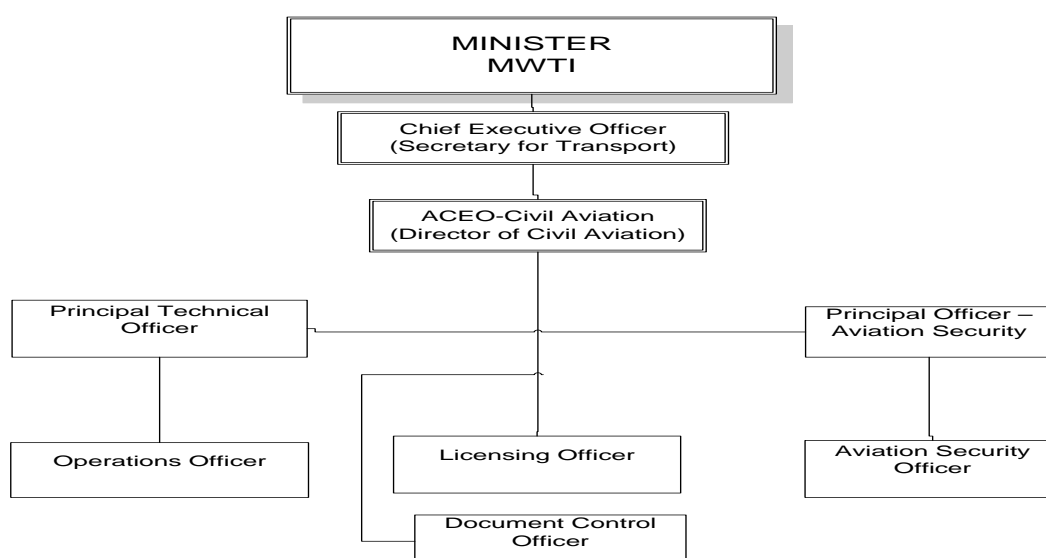
CARs	-	Civil Aviation Rules & Regulations
CARs Pt	-	Civil Aviation Rule Part
CEO	-	Chief Executive Officer
CSO	-	Company Security Officer
COLREG	-	Collision Regulations
DA	-	Designated Authority
FAA	-	Federal Aviation Administration of the United States
ICAO	-	International Civil Aviation Organization
IMO	-	International Maritime Organisation
ISM	-	International Safety Management
ISPS	-	International Security of Port Facilities and Ships
MALIAT	-	Multilateral Agreement on the Liberalisation of International Air Transport
MWTI	-	Ministry of Works Transport & Infrastructure
MS	-	Marine Surveyor
NML	-	National Maritime Legislation
PIASA	-	Pacific Islands Air Services Agreement
PICASST	-	Pacific Islands Civil Aviation Safety and Security Treaty
PFSA	-	Port Facility Security Assessment
PFSP	-	Port Facility Security Plan
PPS	-	Petroleum Product Supplies
PS	-	Principal Surveyor
PSO	-	Principal Shipping Officer
PFSO	-	Port Facility Security Officer
RSO	-	Recognised Security Organisation
SOLAS	-	Safety of Life at Sea
STCW	-	Standard of Training and Certification for Watch-keepers
SSI	-	Senior Safety Inspector
SO	-	Shipping Officer
SI	-	Safety Inspector
SAR	-	Search and Rescue
SSO	-	Ships Security Officer
SSA	-	Ships Security Assessment
SSP	-	Ships Security Plan
UNCLOS	-	United Nation Convention on Law of the Sea.

# CIVIL AVIATION DIVISION

## 1. Introduction

- 1.1 Civil aviation activities and operations in Samoa continue to be mandated by the Civil Aviation Act 1998 and the Civil Aviation Rules of New Zealand as adopted under its Civil Aviation Regulation 2000. Under the ICAO Chicago Convention, Samoa is ultimately responsible for the implementation of all of its obligations with regards to the safety and security of international civil aviation.
- 1.2 The Civil Aviation Division of the Ministry under its above legal mandates continues to be tasked with the following responsibilities;
- The safety & security regulation, oversight and certification of the following in Samoa;
    - Air Operations, airworthiness and maintenance of aircraft
    - Organisations providing civil aviation services – aircraft maintenance, air traffic services, aerodrome operators, aeronautical telecommunication, aviation security, supplier of fuel and aviation meteorology
    - Licensing of aviation personnel
  - Maintain cooperative links with international, regional and national organisations, authorities and agencies on civil aviation matters;
  - Assist and provide advice to the CEO/Secretary for Transport in the development and negotiation of air transport policies and Air Services Agreements suitable for Samoa's developmental needs and monitor its obligatory compliance therewith;
  - Facilitate/issue and maintain a Register of all air transport & civil aviation documents, licenses, certificates and approvals issued by the Ministry;
  - Maintain a Register of aircraft registered in Samoa;
  - Manage, assist negotiate/review and monitor the Contracts necessary for Samoa for the provisions of;
    - (i) safety & security auditing, assessments, inspections; and
    - (ii) upper airspace air traffic services;
  - Facilitate/issue approvals for international non-schedule/itinerant flights requesting landing at Samoan airports for technical reasons;
  - Facilitate/assist in the conduct of aircraft accident/serious incident investigations occurring in or involving aircraft registered in Samoa.
- 1.3 The PASO and CAANZ under Agreements continue to be the Ministry's external partners in delivering on Samoa oversight work programmes involving its above functions.
- 1.4 Three fully sponsored training opportunities for aviation related areas from the Government of Singapore continues to provide needed capacity building in the Civil Aviation Division, supplemented by PASO inspectorate staff on their visits Samoa.

**Fig.1.1 – Organisational structure for the Civil Aviation Division.**



## 2. International Civil Aviation Conventions, Treaties and Agreements

2.1 Samoa has signed, acceded to or ratified the following Conventions;

- *1929 Warsaw Convention* for the Unification of certain Rules relating to International Carriage by Air;
- *1955 Protocol to Amend the Warsaw Convention of 1929, The Hague 1955;*
- *1944 Chicago Convention* on International Civil Aviation;
- *1971 Montreal Convention* for the Suppression of Unlawful Acts Against the Safety of Civil Aviation;
- *1963 Tokyo Convention* on Offences and Certain Other Acts Committed On Board Aircraft;
- *1980 Protocol to Chicago Convention* (Article 83 bis);
- *1984 Protocol to Chicago Convention* (Article 3 bis);
- *1988 Montreal Supplementary Protocol* for the Suppression of Unlawful Acts of Violence at Airports Serving International Civil Aviation;
- *1991 Montreal Convention* on Marking of Plastic Explosives for the Purpose of Detection;
- *1970 Hague Convention* for the Suppression of Unlawful Seizure of Aircraft;
- *1990 Protocol to amend ICAO Convention* (article 50a);
- *1990 Protocol Relating to an Amendment to the Convention on International Civil Aviation;*
- *1989 Protocol Relating to an Amendment to Convention on International Civil Aviation* (Article 56);

2.2 Samoa has in place the following Air Services Agreements (ASA);

- *Bilateral ASA with Fiji - Signed: 7 February 1991*
- *Bilateral ASA with Australia (Open Skies) - Signed: 11 August 2000*
- *Bilateral ASA with New Zealand (Open Skies) - Signed: 22 November 2000*
- *Bilateral ASA with Tonga (Open Skies) - Signed: 18 August 2001*
- *Bilateral ASA with Cook Islands (Open Skies) - Signed: 18 September 2001*
- *Multilateral Agreement on the Liberalisation of International Air Transport (MALIAT) (NZ, Singapore, US, Brunei, Tonga and Cook Is) Acceded: 04 July 2002; (Bilaterals with these countries have been suspended due to the MALIAT)*
- *Bilateral ASA with Niue (Open Skies) - Signed: 8 November 2002*

2.3 Other Agreements and Treaties that Samoa has ratified are;

- *Pacific Islands Air Services Agreement (PIASA) Signed: 7 August 2004; Ratified: 12 October 2004*
- *Pacific Islands Civil Aviation Safety and Security Treaty (PICASST) Signed: 7 August 2004; Ratified: 12 October 2004*

## 3. Notable Events July 2009 – June 2010

- 13 July 2009 – Due to a request from the Government of Samoa through the Samoa Tourism Authority, Air Pacific was issued by the Ministry with a Special Licence to operate air services outside the ambit of the Samoa-Fiji Airservices Agreement, between Apia and Honolulu, Hawaii.
- 08 Dec 2009 – Exemption from complying with the security fence height requirement issued to the Samoa Airports Authority for the low height security fence by its navigational aid (VOR), as sea, coastline and regular mobile patrols were considered acceptable as additional security measures.
- 25 Dec 2009 – A terrorist attempted to detonate plastic explosives hidden in his underclothing on board Northwest Airlines Flight 253 with 289 people on board. As a result, an increase in security measures at Faleolo in the form of 100% passenger screening for flights to the US.
- 15 Jan 2010 – Completed Audit submissions to ICAO for their Universal Safety Oversight Audit Programme assessments for Samoa
- 15 April 2010 – Volcanic ash from the Iceland volcano disrupted air traffic across northern Europe, affecting long haul passengers from Samoa travelling to Europe via New Zealand and Australia.
- 17 Jun 2010 – Ministry hosted a meeting with the Samoa Airport Authority and Polynesian Airlines to discuss prepayment of PASO fees in accordance with its governing Council resolution from the Solomon Island's meeting in October 2009.

#### 4. Aircraft current on Samoa's Aircraft Register July 2009 – June 2010

- a) 5W-FAY [1998] - Twin otter DHC6-300, Polynesian Airlines;
- b) 5W-FAV [1998]-Britten Norman Islander BN2, Polynesian Airlines;
- c) 5W – FAW [2008] - Twin Otter DHC6-300, Polynesian Airlines;
- d) 5W-SPX [2008]-Short Brothers PLC SD-360, South Pacific Express.

#### 5. Civil Aviation Budget approved for July 2009 – June 2010

5.1	Overall Budget	– 318,534
	Personnel	– 251,398
	Operating	– 67,136
	Overheads	– 114,581
5.2	Revenue	
	Upper Airspace	– 785,000
	Civil Aviation Receipts	– 9,099.60

#### 6. Air Service Licenses July 2009 – June 2010

6.1 The following Air Operators were issued with two year validity Air Services Licenses during the period of this Report:

Air Service Licenses Issued	– 4 @ \$230.00 = \$920.00
1) Air New Zealand	– Effective: 06 August 2009
2) Air Pacific Limited	– Effective: 06 August 2009
3) Polynesian Blue	– Effective: 29 October 2009
4) Polynesian Airlines	– Effective: 22 April 2010

6.2 Special Air Service Licence (SASL) issued for the first time to Air Pacific Ltd for Air Operations to Honolulu Return

- Special Air Service Licence Issued – 1 @ \$230.00 = \$230.00
- 1) Air Pacific Ltd – Effective: 13 July 2009 (First Issue)

## 7. Airline Returns July 2009 – June 2010

Airlines issued with an Air Service License to operate to/from Samoa must file monthly statistical returns as a requirement of their Air Service Licenses.

Airline	Pax Arrivals	Pax Departures	Inbound Freight	Outbound Freight
Air New Zealand	64,883	65,160	520,906 kg	776,943 kg
Air Pacific	22,243	22,394	94,915kg	53,087kg
Polynesian Airline	24,506	26,278	87,325 kg	72,877 kg
Polynesian Blue	57,615	60,100	101,456 kg	46,443 kg
South Pacific Express	2,086	1,867	Stopped operating 18/09/09	
Inter Islands Airways	14,086	13,614	54,577 kg	13,665 kg

## 8. Personnel Licenses and Ratings July 2009 – June 2010

- 8.1 Pilot Validations issued – 19 @ \$120 = \$2,280.00

## 9. Air Operator Certificates July 2009 – June 2010

- 9.1 Foreign Air Operator Certificates

Certificates issued – 3 @ \$330.00 = \$990.00

- 1) Air New Zealand – Effective: 01 December 2009
- 2) Pacific Blue – Effective: 29 October 2009
- 3) Inter Island Airways – Effective: 18 January 2010

## 10. Chartered Flights Landing Approvals Issued July 2009 – June 2010

- 10.1 Chartered flights and non-scheduled flights to Samoa are issued with flight/landing approvals from the Ministry. No costs or charges are involved with the issuance of these approvals except for normal charges levied by the Samoa Airport Authority, Ground Handling Fees by Polynesian Airlines and Upper Airspace charges levied by the Airways Corporation New Zealand.

Number of landing approvals issued – 71

## 11. Certificate of Airworthiness issued July 2009 – June 2010

Certificates issued – 2 @ \$230.00 = \$460.00

1. Polynesian Airlines 5W FAY – Effective: 26 Feb 2010
2. Polynesian Airlines 5W FAW – Effective: 25 April 2010

## 12. Aerodrome Certification July 2009 – June 2010

- 12.1 Aerodrome Certificates issued by the Ministry under Civil Aviation Rule Part 139 can be valid up to five (5) years with the following aerodromes with valid Certificates during the period of this report:-



<b>Certificates Issued</b>	– 3 @ \$330.00 = \$990.00
1. Maota Airport	– Effective: 26 July 2009
2. Asau Airport	– Effective: 22 December 2009
3. Fagalii Aerodrome	– Effective: 29 June 2010

### 13. Fuel Supply Organisation Certificate July 2009 – June 2010

- 14.1 Aircraft Refueling Organisation(s) have to comply with the requirements stipulated in Civil Aviation Rule Part 19 Subpart F. Petroleum Product Supplier (PPS) Limited is the sole aviation fuel supplier in Samoa certificated by the Ministry.

<b>Certificates issued</b>	– 1 @ \$230.00 = \$230.00
1) PPS Ltd	– Effective: 01 June 2010

# MARITIME DIVISION

**1.** The Maritime Division is responsible for all maritime regulatory functions within the country as well as the implementation of its obligation in regards with all maritime matters within the region and internationally. The Ministry of Works, Transport & Infrastructure's Maritime Division continues to provide its essential regulatory services to ensure safety and security of all maritime transportation, port facilities and related activities. The work of the Maritime Division is carried out in accordance with the following mandates with the execution of maritime actions to be fully complied with these International Maritime Organization (IMO) conventions, protocols, codes, standards and recommended practices.

**Mandates:**        *Shipping Act 1998*  
                          *Marine Pollution Prevention Act 2008*  
                          *Maritime Security Regulation 2004*  
                          *Shipping Registration Regulation 2001*  
                          *STCW Regulation 1998*  
                          *ISM 1998*  
                          *Small Vessels Regulation 1998*

**International Conventions, Protocols, Codes:**

- |                                      |                                    |                                    |
|--------------------------------------|------------------------------------|------------------------------------|
| 1. <i>IMO Convention 1948</i>        | 10. <i>STCW 78/95</i>              | 19. <i>SAR Convention 1979</i>     |
| 2. <i>IMO Amendments 1991</i>        | 11. <i>MARPOL 73/78 Annex I/II</i> | 20. <i>FAL Convention 1999</i>     |
| 3. <i>IMO Amendments 1993</i>        | 12. <i>MARPOL 73/78 Annex III</i>  | 21. <i>LLMC Protocol 1966</i>      |
| 4. <i>SOLAS 1974 – ISM – ISPS</i>    | 13. <i>MARPOL 73/78 Annex IV</i>   | 22. <i>LLMC Convention 1976</i>    |
| 5. <i>SOLAS Protocol 1978</i>        | 14. <i>MARPOL 73/78 Annex V</i>    | 23. <i>SUA Convention 1998</i>     |
| 6. <i>SOLAS Protocol 1988</i>        | 15. <i>MARPOL 97 Annex VI</i>      | 24. <i>HNS Convention 1999</i>     |
| 7. <i>Load Lines Convention 1966</i> | 16. <i>CLC Protocol 92</i>         | 25. <i>BUNKERS Convention 2001</i> |
| 8. <i>Load Lines Protocol 1988</i>   | 17. <i>CLC Protocol 92</i>         | 26. <i>COLREG Convention 1972</i>  |
| 9. <i>Tonnage Convention 1969</i>    | 18. <i>OPRC Convention 1990</i>    | 27. <i>UNCLOS.</i>                 |

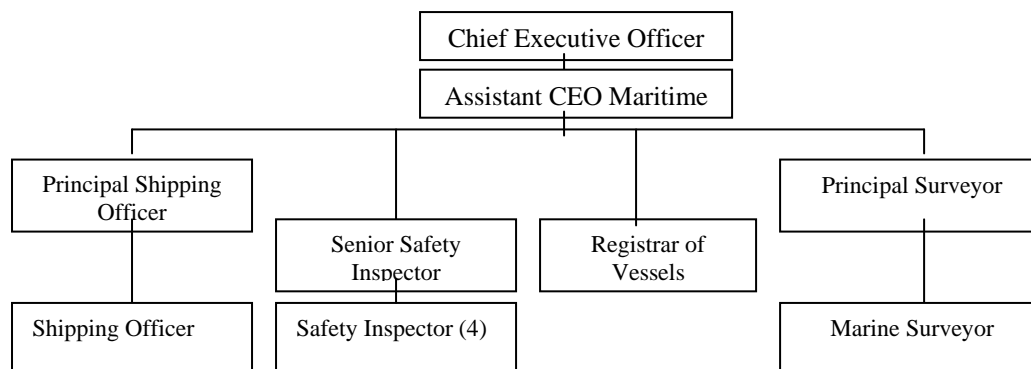
**Essential Regulatory Services – the Maritime Division provide these services**

- Ship Registration
- Ship Surveying and Inspection
- Shipping Crew Training and Certification
- Ship Safety Clearances
- Seafarers Employment Contracts
- Security Assessment of ISPS Port Facilities and Ships
- ISPS Audit of Ports and Ships
- Approval Training Modules School of Maritime Training.
- STCW Audit Maritime Training Institution
- Flag State, Coastal State and Port State Implementation
- Technical Advice of International Convention and National Maritime Legislation to Shipping Industries, Ports, Training Institute and Seafarers
- Monitor Compliance of International Convention and National Legislation

**Sections of the Division**

- Ship Registration Section
- Surveying Section
- Shipping Section
- Safety, Navigation & Hydrographic Section

**Organizational Structure of the Maritime Division.**



## 2. SHIP REGISTRATION

These are the vessels registered under the Samoa Shipping Act 1998 and Shipping Registration Regulation 2001.

### LIENS & MORTGAGES:

#### Maritime Mortgages:

Name of Vessel	Official Number	Name of Owner	Date of Registration
FV Jessica	0053	Apia Export Fish Packers	14 <sup>th</sup> Nov 2008

#### Maritime Liens:

There were no liens registered during the period reported

### VESSELS WITH VALID REGISTRATION:

#### Cargo & Passenger Vessels:

Name of Vessels	Official Number	Name of Owner	Issue Date	Expiry Date
MV Lady Naomi	0037	Samoa Shipping Corporation	19/12/2008	19/12/2009
MV Lady Samoa II	0031	Samoa Shipping Corporation	03/11/2008	03/11/2009
MV Samoa Express	0050	Samoa Shipping Corporation	17/10/2008	19/10/2009
MV Fotu o Samoa II	0063	Samoa Shipping Corporation	07/05/2009	07/05/2010

#### Cruise Ship:

Name of Vessel	Official Number	Name of Owner	Issue Date	Expiry Date
MV Lady Filifilia	0074	Samoa Shipping Corporation	10/06/2009	10/06/2010

#### Special Purpose Vessels:

Name of Vessels	Official number	Name of Owner	Issue Date	Expiry Date
Tug Boat Tafola	0032	Samoa Port Authority	30/04/09	30/04/2010
MV Nafanua	0027	Ministry of Police	24/06/09	24/06/2010

#### Pleasure Craft:

Name of Vessels	Official number	Name of Owner	Issue Date	Expiry Date
Lancer	0072	Aqua Samoa	24/05/09	24/05/2010
Southern Pacific	0070	Aqua Samoa	24/05/09	24/05/2010
Sea Ray	0071	Aqua Samoa	24/05/09	24/05/2010
Shilo II	0067	Samoa Adventure	04/06/09	04/06/2010

#### Fishing Vessels More Than [>] 15 Meters

Name of Vessel	Owner/Operator	Date of Issued	Expiry Date
Coureur De Bois I	Tautai Fishing Ltd	10 Sept 2008	27 Sept 2009
Lady Yolandie	Tautai Fishing Ltd	02 Oct 2008	02 Oct 2009
Jessica	Apia Export Fish Packers	24 Nov 2008	24 Nov 2009
Tifa I Moana	Tradewinds	27 Nov 2008	27 Nov 2009
FV Jay Kay	Dencor Company Ltd	09 Aug 2008	09 Aug 2009
Yellow Fin I	Roy Lee	18 Sept 2008	18 Sept 2009
Yellow Fin II	Roy Lee	18 Sept 2008	18 Sept 2009
Samoa Girl	Apia Export Fish Packers	30 June 2009	30 June 2010

## 3. SHIP SURVEYING AND INSPECTION

This section is responsible for all matters relating to safety survey of vessels of all sizes and types that currently operated and registered in the Samoan Registry of Ships.

**LIST OF VESSELS SURVEYED BY THE SURVEYING SECTION DURING FY 2009/2010**

**Cargo and Passenger Vessels Operated by Samoa Shipping Corporation Ltd**

Qty	Name of Vessel	Date of Survey	Expiry Date
1	MV Samoa Express	17 Oct 2009	17 Oct 2010
2	MV Lady Samoa II	03 Nov 2009	03 Nov 2010
3	MV Lady Naomi	19 Dec 2009	19 Dec 2010
4	MV Lady Samoa III	19 Dec 2009	19 Dec 2010
5	MV Fotu o Samoa II	13 May 2010	13 May 2011
6	MV Lady Filifilia	11 June 2010	10 June 2011

**Special Purpose Vessels Surveyed From July 2009 to June 2010**

Name of Vessel	Date of Survey	Expiry Date	Owner/Operator
MV Nafanua	05 July 2009	05 July 2010	Ministry of Police & Prisons
Tug Boat Atafa	23 January 2010	23 January 2011	Samoa Ports Authority
Pilot Boat Fuao	04 March 2010	04 March 2011	Samoa Ports Authority
Tug Boat Tafola	30 April 2010	30 April 2011	Samoa Ports Authority

**Pleasure Craft Surveyed From July 2009 to June 2010**

Name of Vessel	Date of Survey	Expiry Date	Owner/Operator
Shilo II	18 May 2010	18 May 2011	Samoa Adventure

**Fishing Vessels More Than [ $>$ ] 15 Meters In Length Surveyed From July 09 – June 10**

Name of Vessel	Date of Survey	Expiry Date	Owner/Operator
Coureur De Bois I	25 Sept 2009	25 Sept 2010	Tautai Fishing Ltd
Yellow Fin I	23 October 2009	23 October 2010	Roy Lee
Yellow Fin II	23 October 2009	23 October 2010	Roy Lee
Jessica	26 Nov 2009	26 Nov 2010	Apia Export Fish Packers
FV Jay Kay	20 January 2010	20 January 2011	Dencor Company Ltd
Violomanu	23 March 2010	23 March 2011	Apia Export Fish Packers

**Fishing Vessels Less Than [ $<$ ] 15 Meters In Length Surveyed From July 09 – June 10**

Name of Vessel	Date of Survey	Expiry Date	Owner/Operator
Sweet Dolly	05 Nov 2009	05 Nov 2010	Raymond Slade
ACA Fishing Boat	3 Sept 2009	3 Sept 2010	Laki Mulipola
Lady Makerita	29 Aug 2009	29 Aug 2010	Smith Siaumau
Lady Sina II	15 Oct 2009	15 Oct 2010	Gaoa Kuresa
Sea Eagle	25 Aug 2009	25 Aug 2010	Mark Huch
Ulimasao	01 Oct 2009	01 Oct 2010	MAF/Fisheries
Lady Delcia	09 Dec 2009	09 Dec 2010	Tautai Koroseta
Lady Lesina	12 Dec 2009	12 Dec 2010	Fiatamalii Semisi
Jonika Explorer	09 Jan 2010	09 Jan 2011	Nofoituaiga L. Viane
Lady Corrina	15 Jan 2010	15 Jan 2011	Orlando Keil
Ialele	16 Jan 2010	16 Jan 2011	Mau'u Kee
Joseph & Shirley	19 Jan 2010	19 Jan 2011	Perkin & Scott Headle
Drunken Master I	27 Jan 2010	27 Jan 2011	Rolando Tavita
Drunken Master II	27 Jan 2010	27 Jan 2011	Rolando Tavita
K.114	28 Jan 2010	28 Oct 2011	Masoe Filisi Kruse
Katherine J	06 Feb 2010	06 Feb 2011	Apia Export Fish Packers
Sea Angel III	15 Feb 2010	15 Feb 2011	Frank Fane Wong

**4. SHIPPING TRAINING CERTIFICATION AND SEAFARERS OVERSEAS EMPLOYMENT CONTRACTS**

**Certificates issued in compliance with the International Convention on the Standard of Training and Certification of Watchkeepers (STCW 95)**

**STCW Certificates issued from July 2009 – June 2010**

Qty	Name of certificates issued	Total
1	Master of Inshore Voyages (Class 5)	14
2	Master Class 4 (Endorsement)	3
3	Master Class 3 (Endorsement)	8
4	Master Class 2 (Endorsement)	2
5	Master Class 1 (Endorsement)	10
6	Engineer Inshore Voyage (Class 5)	6
7	Engineer Class 4 (Endorsement)	1
8	Engineer Class 3 (Endorsement)	2
9	Engineer Class 2 (Endorsement)	7
10	Engineer Class 1 (Endorsement)	5
11	Master/Engineer Class 6 (Fishing Vessels)	8
12	Rating Forming Parts (Navigational watch)	46
13	Rating Forming Parts (Engineering room)	6
14	Safety Certificates	394
15	Master Exemption Certificates	nil
16	Seafarers Contracts (Endorsement)	161

**CREW LIST FOR SAMOAN FLAG VESSELS AND FOREIGN VESSELS****Seafarers employed on Foreign Vessels**

Vessel Name	Quantity	Vessel Name	Quantity
MSC Fantasia	14	MSC Lirica	9
MSC Musica	10	MSC Splendida	14
MSC Amonia	8	MSC Sinfonia	11
MSC Orchester	12	MSC Magnifica	11
MSC Oriane	1		
MSC Opera	9		
MSC Lucy	2		
MSC Melody	3		
MSC Poesia	10		

**Seafarers for Samoan Flag Vessels**

Vessel Name	Total
M.V Forum Samoa II	11
MV Lady Naomi	13
MV Lady Samoa II	10
MV Lady Samoa III	25
MV Samoa Express	11
MV Lady Filifilia	6
MV Fotu o Samoa	11
Police Patrol Boat Nafanua	17
Tug Boat Tafola	6
Tug Boat Fuao	6
Tug Boat Atafa	7
Pilots	5

## 5. SAFETY, NAVIGATION AND HYDROGRAPHY

### Loading and Bunkering of Vessels at Mulifanua Port

Number of Safety Clearance Issued		34 books	1,700
Total number of Passengers			539323
Number of departure passengers			267,493
Number of arrival passengers			271830
Total Number of Vehicles			97,200
Departure Vehicles			48,688
Arrival Vehicles			48,512
Approval of Dangerous Good Carried	LPG	(9kg) (4.5kg)	1,884 280
	Engine Oil	150drums	30 tons
	Hydraulic Oil	60 drums	12 tons
Premix Trucks	14 trucks		280 tons
Ship's Bunkers	Fotu Samoa II		240 tons
	Samoa Express		180 tons
PPS Charter (Mulifanua- Salelologa)	Diesel Fuel		2400 tons
	Unleaded Fuel		1200 tons
	Kerosene		55 tons

### Loading and Bunkering of Vessels at Salelologa Port

Number of Safety Clearance Issued		41 books	2,050
Total Number of Passengers			539323
Number of departure passengers			267,493
Number of arrival passengers			271,830
Total Number of Vehicles			97,200
Departure Vehicles			48,512
Arrival Vehicles			48,688
Approval of Dangerous Good Carried	LPG	(9kg) (4.5kg)	Empty Empty
	Engine Oil	200	120 empties
	Hydraulic Oil		60 empties
Ship's Bunkers	Lady Samoa II		480 tons
	Fotu Samoa II		35 tons
	Samoa Express		25 tons

### International and Domestic Voyages Reports of Apia International Port

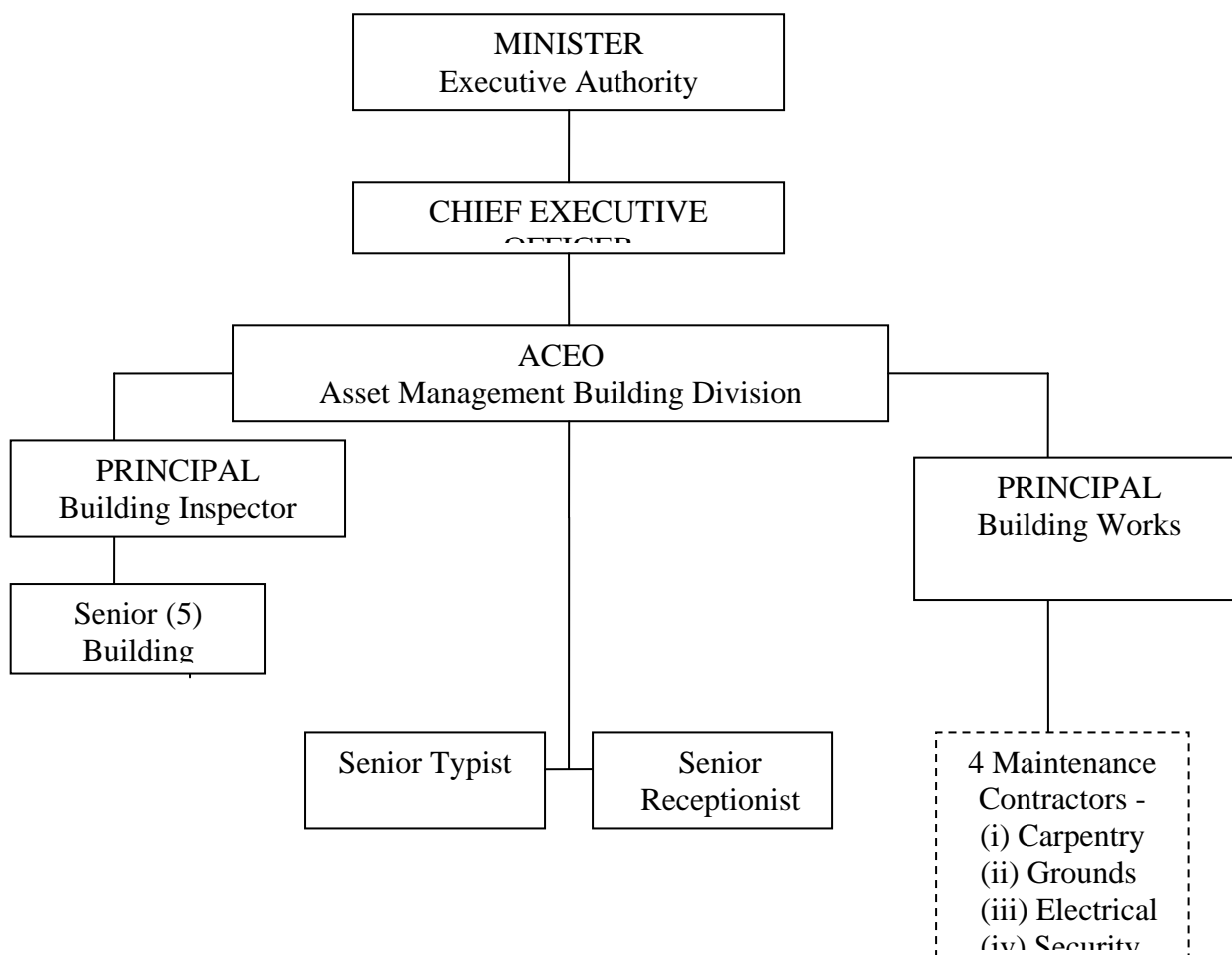
Total Number of Passengers	MV Tokelau, MV		2,342
Departure Passengers to Tokelau	Lady Naomi &		1383
Arrival Passengers from Tokelau	Samoa Express		959
Total Number of Passengers	MV Lady Naomi &		10,726
Departure passengers for PagoPago	MV Tokelau		5,499
Arrival passengers from PagoPago			5,227
Total Number of Passengers Domestic	Lady Filifilia and		1557
Dept Passengers	Lady Naomi		726
Arrival Passengers			831
Safety clearance issued Domestic		4books	200
Safety clearance International		12 books	600
Dangerous Goods approval		(LPG 9kg)	1,6 80
		(LPG 4.5kg)	684
Approval of Dangerous Goods for Tokelau		Diesel Fuel	96 tons
		Petrol Fuel	384 tons
		Kerosene	72 tons
Approval for PPS Charters		Diesel fuel	6,981 tons

from Apia to Salelologa			
		Unleaded fuel	2904 tons
		Kerosene	122 tons
Vessels Bunker	Lady Naomi	Diesel Fuel	360 tons
“ “	Lady Filifilia	Diesel	70tons
“ “	Samoa Express	Diesel	180 tons
“ “	MV Tokelau	Diesel	502tons
Approval Dangerous Goods to land from International Ships	Agent	Dangerous Good	Containers
MV Forum Samoa	Transam/ PFL	Assorted	10
		Butane Gas	3
Captain Tasman	Transam	Butane Gas	5 tanks
MV Tapaga	Transam	Assorted	15
Southern Lilly	Transam	Assorted	25
	Transam	Powergel hazardous	1x 20' 150 cases
New Polynesia	Transam	Assorted	10
MV Matua	Polynesian	Assorted	4
Approval of transit dangerous Goods			
Southern Tiare ( Niue)	Transam	Diesel / Petrol	10
Lady Naomi (PagoPago)	Transam	Paint	2 tons
	Transam	Batteries	3.75 tons
	Transam	Engine oil / transfluid	3 pallets
	Transam	Acids recharge	2.5 tons

# ASSET MANAGEMENT BUILDING DIVISION

## 1. Introduction:

- 1.1 By virtue of Section Part IV Building Regulations - Ministry of Works (MOW) Act 2002, the Ministry of Works, Transport and Infrastructure continues to regulate, monitor and provide advice to the public, community and stakeholders on building matters.
- 1.2 The core functions performed by the Asset Management Buildings Division are as follows:
- (i) Administer, apply, regulate, enforce and promote the National Building Codes 1992 for Samoa (NBC) and other regulations; such as the Home Building Manual 1992 and the Stronger Buildings Guide 1996.
  - (ii) Administer and manage the tenancy, maintenance and rental collection of all Government Residential Housing properties.
- 1.3 Organisation Structure for the Asset Management Building Division 2008-2009



- 1.4 In February 2010, the title of Government Housing Manager (Principal Architect/Clerk of Works) position was redesignated to Principal Building Works Officer to correctly reflect the overall change of activities that the Building Division underwent after the Structural Reforms in 2003. The position was advertised and succeeded by one of the Senior Inspectors in the division.
- 1.5 The position of Senior Inspector was advertised and was succeeded by the Building Inspector who was recruited on a temporary basis.
- 1.6 Two (2) Senior Inspectors graduated with APTC Certificate III Carpentry & Joinery.

## 2. Functions :



In accordance with Part IV Building Regulations of Ministry of Works Act 2002, the Asset Management Buildings Division is responsible for implementing the following duties :

- Regulate and provide advice on execution of all Building Structure Activities in Samoa, including;
- Inspection of all building works;
- Administer and advise on the issuance of building permits;
- Monitor building projects compliance with pre-approved plans;
- Enforcement of all the standards in the National Building Codes and other related Building Regulations;
- Performing technical assessment reports on dilapidated buildings in the urban area and as requested by the public.

Management of Government Residential Housing properties includes;

- Administer and facilitate Government Housing tenancy activities;
- Screening applications in accordance with Government Residential Housing guidelines;
- Preparing submissions and reporting to the Government Housing Committee meetings.
- Regulating and monitoring all maintenance works performed by Service Contractors on the Government Housing properties including Carpentry, plumbing & painting , Electrical, Grounds keeping and Security of all Government Housing Compounds.

### 3. Achievements:

#### 3.1 Building Inspection Section

Continue to monitor the issuance and enforcement of building permits for 3 types of projects; (1) New Construction, (2) Structural Repair / Addition Work and (3) Major Demolition Work.

The building permit application form enforced verifications of the Road Reserve by the Land Transport Division (LTA), Development Consent by the Planning Urban and Management Agency (PUMA), and compliancy from Samoa Water Authority, Fire Emergency and Service Agency, SamoaTel, Electric Power Corporation.

The total number of Staff in the division :

1 ACEO, 1 Principal Building Inspector, 5 Senior Building Inspectors, 1 Principal Building Works Officer and 2 Senior Typists.

In addition to the mentioned tasks, this section played the role of project management for various Government Projects such as :

- The new Ministry of Justice and Courts Administration building at Mulinuu estimated to be completed in January 2010. Contract was for design and build by Jian Ting Construction ;
- Construction of new Government Building Complex at Sogi comprising of a six (6) storey building and a convention centre. Contract was for Design and Build by Shanghai Construction Group Ltd.,. Tentatively this Project would now be completed in October 2011.
- Construction of new Headquarters for Ministry of Health comprising of a three (3) storey building. Contract was for Design and Build by Shanghai Construction Group Ltd.,. This Project would be completed in mid-2011.

This division regularly participates in most Evaluation Panels for Bidding submissions involving building construction projects for the Government of Samoa, such as the following projects :

- New school buildings for the Ministry of Education, Sports and Culture at Malifa;
- Renovations to Land Transport Authority Office Buildings at Vaitele
- Renovations for Electoral Office Commissioner at Mulinuu (formerly the Lands & Titles office)
- Water and Sanitation Sector through the Sanitation Technical Committee

The Minister of Works, Transport & Infrastructure continued his Chairmanship for the Tsunami Shelter Recovery Programme. The TSRP Final Report was officially released in September 2010. The total number of families that received assistance from Government and Donor Partners was 862 (181 from Donors and 681 from Government).

The Government extended its assistance by waiving all fees related to Building Permits for Tsunami recovery work.

#### Financial Year 2009-2010

	BUILDING TYPE	NUMBER OF BUILDINGS
1	Residential	96

2	Commercial	34
3	Industries	7
4	School Buildings	4
5	Churches	5
6	Hospitals	0
	<b>TOTAL</b>	<b>146</b>

### 3.2 Government Residential Housing Section

This section administers and manages the Government Residential Housing properties in accordance with the Government Housing policies.

The Principal Building Works is responsible mostly for all maintenance requests from tenants; and monitoring and inspections of all maintenance work, which are implemented by the four (4) maintenance contractors.

The Receptionist assists with all secretarial and processing payment duties.

Maintenance of all Government Housing was advertised in the newspaper inviting tenders from local contractors. Submissions would comply with Samoa Tenders Board's policies :

- i) Carpentry, Plumbing & Painting ;
- ii) Electrical works ;
- iii) Grounds maintenance;
- iv) Security Guards

	<b>FINANCIAL YEAR</b>	<b>2009-2010</b>
1	New Tenancy Agreements	38
2	Extended Tenancy Agreements	13
3	Government Houses inspected weekly	101
4	Government Houses underwent major renovations	3
5	Government Houses underwent minor renovations	52
6	Government Houses transferred to other Ministries/Organisations	5
7	Total Number of Government Houses	101
8	Compounds serviced by day/night securities	5
	Total Rentals Collected (Excluding Bond Fees)	

### 4. Other Accomplishments

- In the Financial Year 2009-2010, two (2) Senior Building Inspectors graduated from Australia Polytechnic Training Courses (APTC) in Fiji.  
This year two (2) more Senior Inspectors continue their Block Courses for the same certificate at APTC.
- The division acquired three (3) reconditioned computers to be shared by the Senior Inspectors.

### 5. Challenges

- 4.1 Strengthening the monitoring role of all construction activities in Samoa with regards to the National Building Code and standards continues to be one of our biggest challenges. While some of the public are supportive of Government initiatives, some refuse to proceed with the permit applications for their developments.
- 4.2 The lack of or an inadequate prosecution process of the unauthorized building owners.
- 4.3 The majority of new building works inspected were located near the main roads. Complete coverage of building works in the rural areas due to unavailability of vehicles.
- 4.4 Difficulties to meet all tenant requests for assets (refrigerators and ovens) to all Government houses due to insufficient allocated funds to replace written off assets
- 4.5 The age of most of the housing stock requires extensive maintenance work. However, this is sometimes overlooked by some tenants when making urgent requests for maintenance work (considering the low rental charges of Government Housing compared to private rentals).
- 4.5 Follow up of long outstanding rental arrears and water bills from previous tenants.

## **5. Recommendations**

In order to meet these challenges, the following recommendations are proposed:

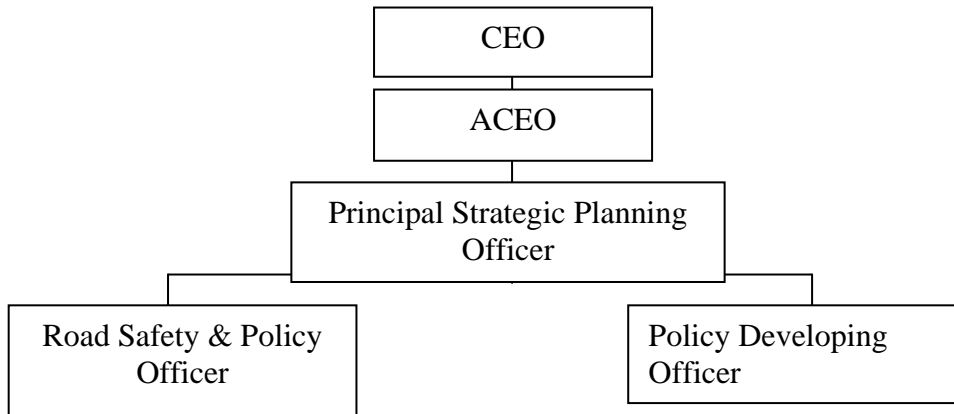
- 5.1 More frequent inspections to monitor and follow up on all compliant and any non-authorised work.
- 5.2 To collaborate with the Attorney General's office in planning an effective prosecution process for non-compliant building owners.
- 5.3 Raising awareness of the general public, business community and all other stakeholders is crucial in reinforcing the message of building safety and importance of the National Building Code. The Disaster Management Organisation continues to promote this cause.
- 5.4 Develop an efficient system of registration for all assets in Government Residential Housing.
- 5.5 The rents charged for newly renovated Government Houses should reflect the improvements and current market rental levels throughout Samoa.

## LAND TRANSPORT DIVISION

### Overview:

This new Division was established in 2009 when the Public Service Commission approved the Ministry's proposal to realign all its functions and responsibilities. The decision was based when the Cabinet approved the separation of all Land Transport service delivery functions from the Ministry of Works, Transport and Infrastructure. The new division's would administer all regulatory functions such as developing policies, strategic planning and monitoring of LTA to ensure its compliance with statutory obligations and achieves specified performance targets and goals.

The approved structure of the new Land Transport Division by the Public Service Commission is shown below



The new functions of the new Division were governed according to the following relevant legislations namely.

- (i) Land Transport Authority Act 2007
- (ii) Ministry of Works Act 2002

### Highlight:

- The ACEO of Land Transport Division was recruited on the 27 August 2009 to lead and manage the Division's activities.

### Achievements:

- Advise and assist LTA to produce National Road Programmes that comply with MWTI's published guidelines and procedures
- Review annual National Road Programmes submitted by LTA ahead of each financial year and recommend to the Minister any changes requests that the Minister should formally issue to LTA
- Manage and monitor Government road reserves.

## CORPORATE SERVICES UNIT

### 1.0 INTRODUCTION

The Corporate Service Division (CSD) main goals are:

1. To provide high quality human resource services
2. To improve the effectiveness, efficiency, productivity and quality of Service of the Ministry of

The Divisional Strategies implemented in order to achieve the above goals and to contribute effectively and efficiently to the achievement of the Ministry Goals for the financial year under report:

- Facilitate and Coordinate Ministry manpower plan and annual training program
- Ensure that all staffs' performance appraisals are fair and transparent
- Provide quality Human Resource Management policies and practices, Human Resource assistance and quality assurance to all divisions
- Assist Managers to effectively manage through provision of high quality, timely, financial management and information services
- Facilitate PSC approval of MWTI structure and staffing levels and funding
- Plan and coordinate the efficient and effective use of IT services within the ministry.
- Continually improve the quality, efficiency and effectiveness of CSD service.

The Corporate Service Division ensures adherence to the Public Financial Management Act 2001, Treasury Instruction 1977 with amendments, Public Service Act 1977 with amendments and relevant circulars from Ministry of Finance, Public Service Commission and also Cabinet Directives.

### 2.0 FINANCIAL PERFORMANCE OUTPUT BUDGET REPORT 2009- 2010

#### 2.1 Expenditures:

#### SUMMARY OF BUDGET FOR FINANCIAL YEAR ENDING 30<sup>TH</sup> JUNE 2010

##### OUTPUTS

Annual Budget Appropriation FY 2009 – 2010	\$	3,801,238
Less: Output Expenditure	\$	<u>3,660,309</u>
		<u>\$ 140,930</u>

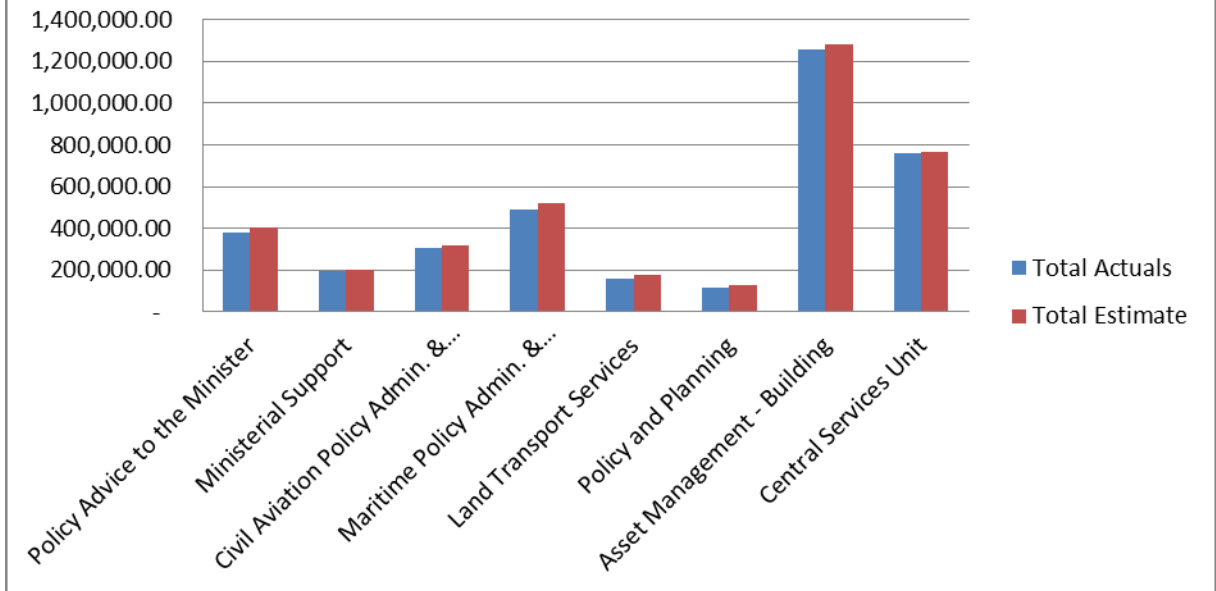
##### THIRD PARTY OUTPUTS

Annual Budget Appropriation FY 2009 – 2010	\$	60,765,458
Less: Expenditures	\$	<u>56,924,869</u>
		<u>\$ 3,840,589</u>

##### TRANSACTION ON BEHALF OF STATE

Annual Budget Appropriation FY 2009 – 2010	\$	4,730,619
Less: Expenditures	\$	<u>2,227,889</u>
		<u>\$ 2,502,730</u>
<b>Total Overall Balance (Under - spent)</b>	<b>\$</b>	<b><u>6,484,249</u></b>

## Statement of Expenditure by Outputs



The Ministry Annual budget at the Output level was under-spent by \$140,930; the under-utilization of funds was mainly derived from the following:

- Road Safety Allowances for Board Members.
- Late recruitment of the Principal Strategic Planner Officer ( Land Transport Services Division )

### 2.2 Revenue / Cost Recoveries

#### SUMMARY OF REVENUE COLLECTION FOR FY2009 – 2010

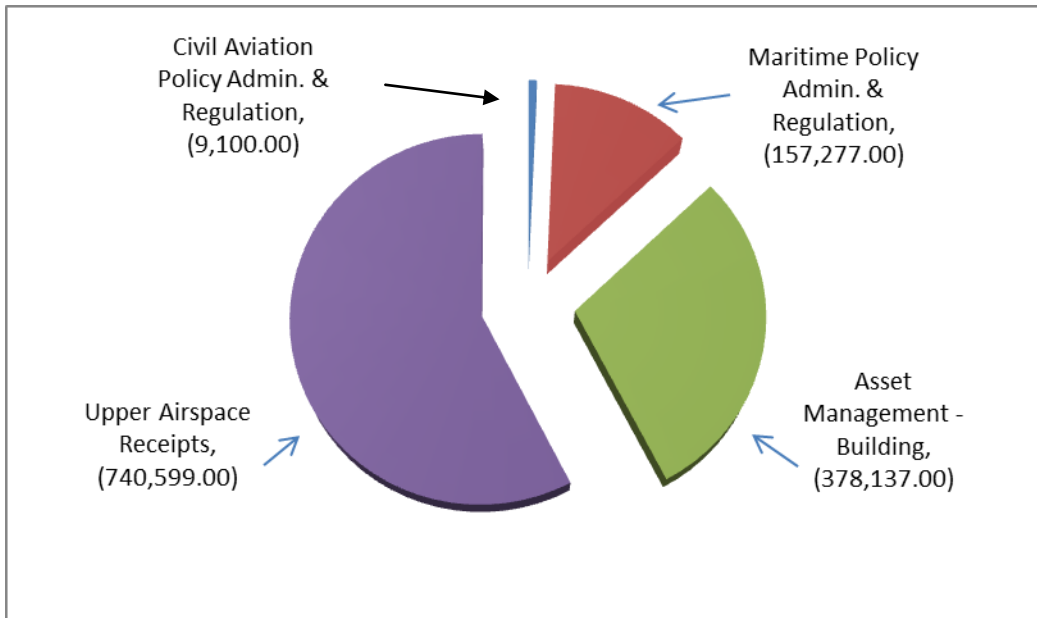
##### COST RECOVERIES BY OUTPUTS

Annual Revenue for FY 2009 – 2010	(584,686.)
Actual Revenue Collected	<u>(544,514.)</u>
	<b><u>(\$40,172)</u></b>

##### REVENUE ON BEHALF OF THE STATE

Projected Revenue for Upper Airspace	(785,000.)
Actual Revenue Received	<u>(740,599.)</u>
	<b><u>(\$44,401.)</u></b>

**Total Revenue Collection below target by (\$84,573.)**



The total revenue and cost recoveries collected by the Ministry for Financial Year 2009 – 2010 is under collected by \$84,573. All outputs had exceeded their revenue target except Output 8 – Asset Management.

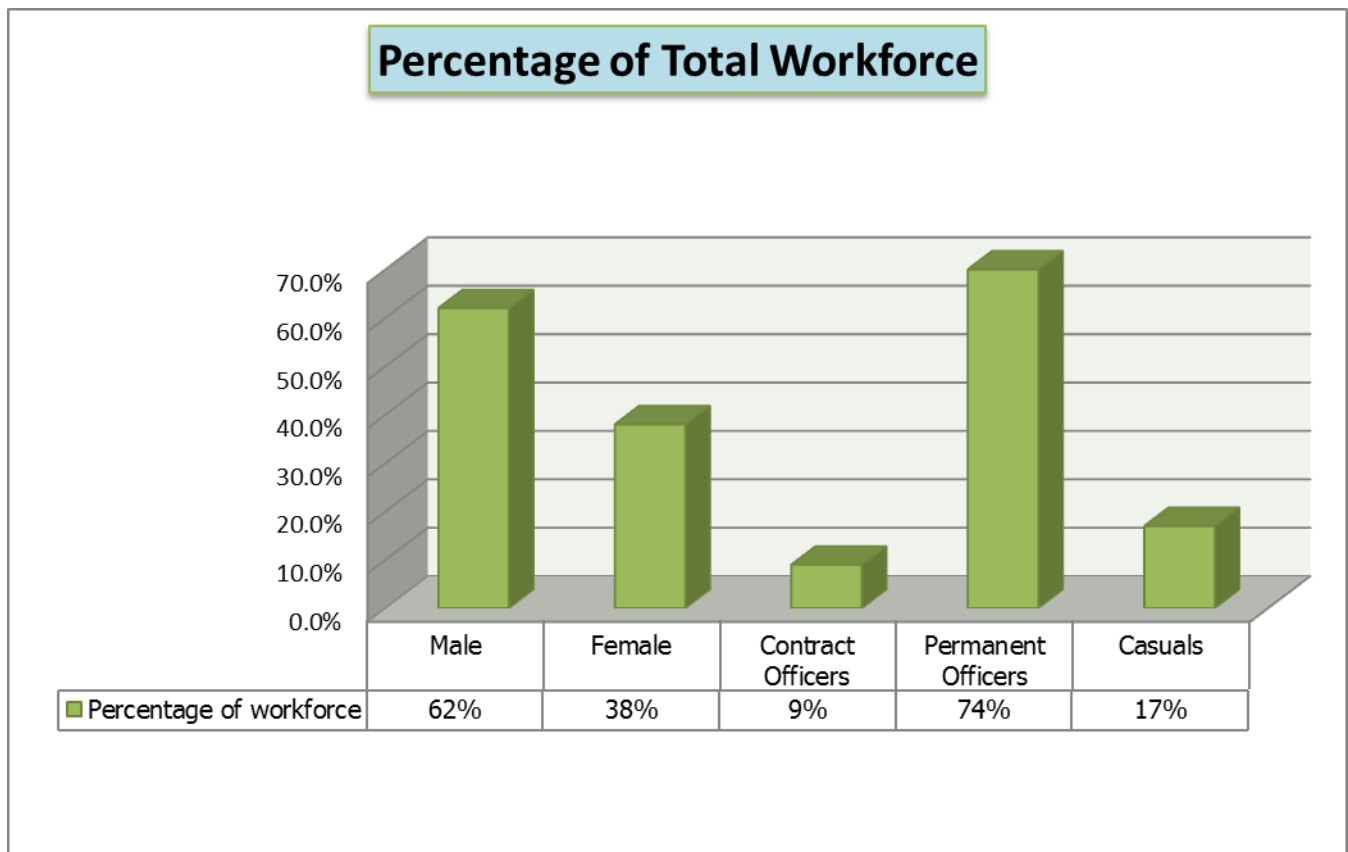
### 3.0 HUMAN RESOURCE/ADMINISTRATION UNIT

The Human Resource section has been involved with facilitation and effective implementation of the Human Resource Component Action Plan for the establishment of the Land Transport Authority which became effective July 2009. This was seen as another decrease to the number of staff and casuals.

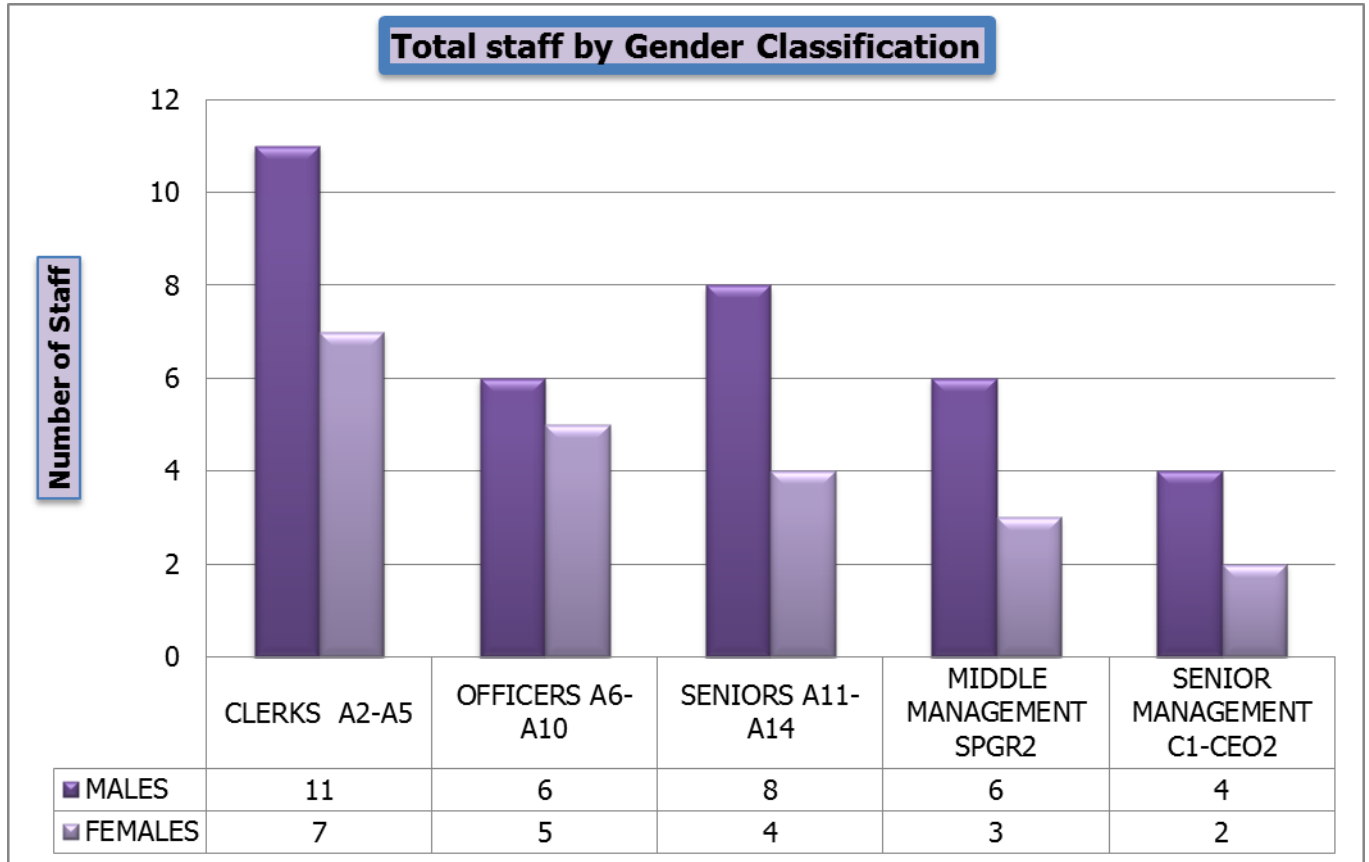
In terms of staff training and development major activities comprising facilitation of human resource practice, coordinate preparation of training submissions and customer services for improvement of service delivery in compliance with the service standards. Induction courses have been conducted for all the Ministry of Works, Transport and Infrastructure new recruits on relevant legislations, policies and procedures.

In this financial year, data collected recorded a total of 16 local trainings and 31 overseas trips in the financial year under review. Participation at these trainings, workshops, seminars and or attachments was mostly from the middle management level, while participation at meetings were from the senior management and ministerial level.

TOTAL WORKFORCE	Number	Percentage of workforce
Men/Male	35	62
Women/Female	21	38
Contract Officers	5	9
Permanent Officers	41	74
Casuals	9	17

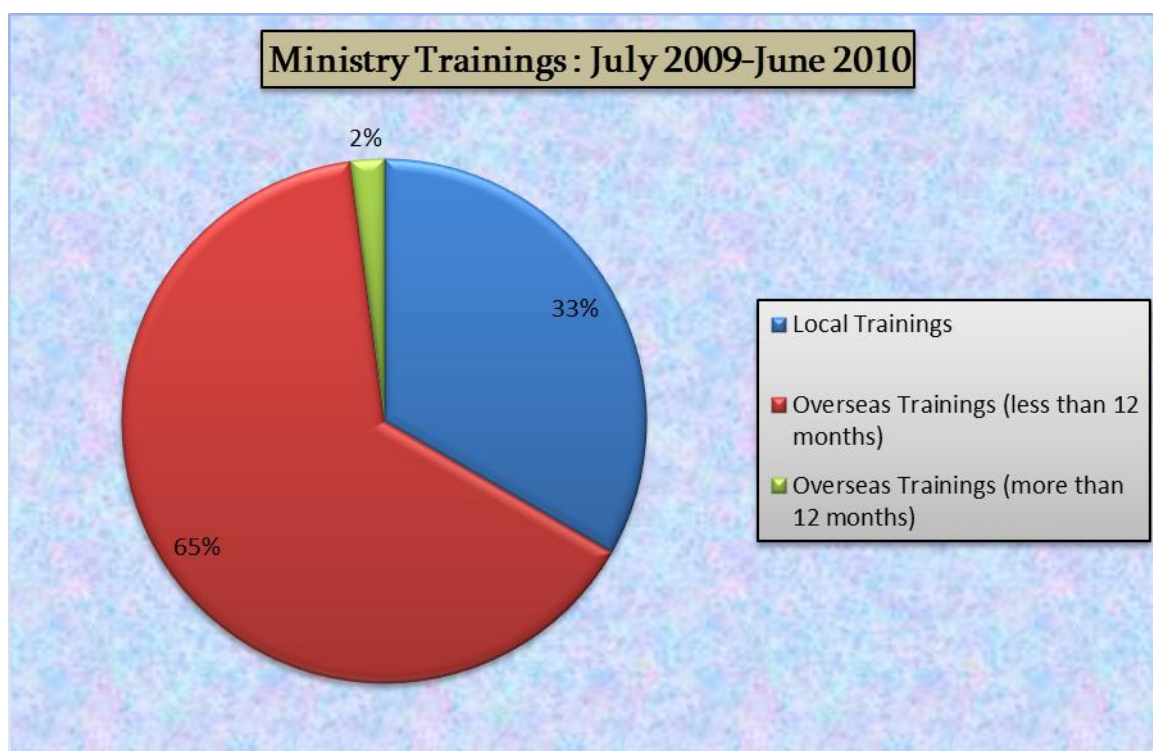
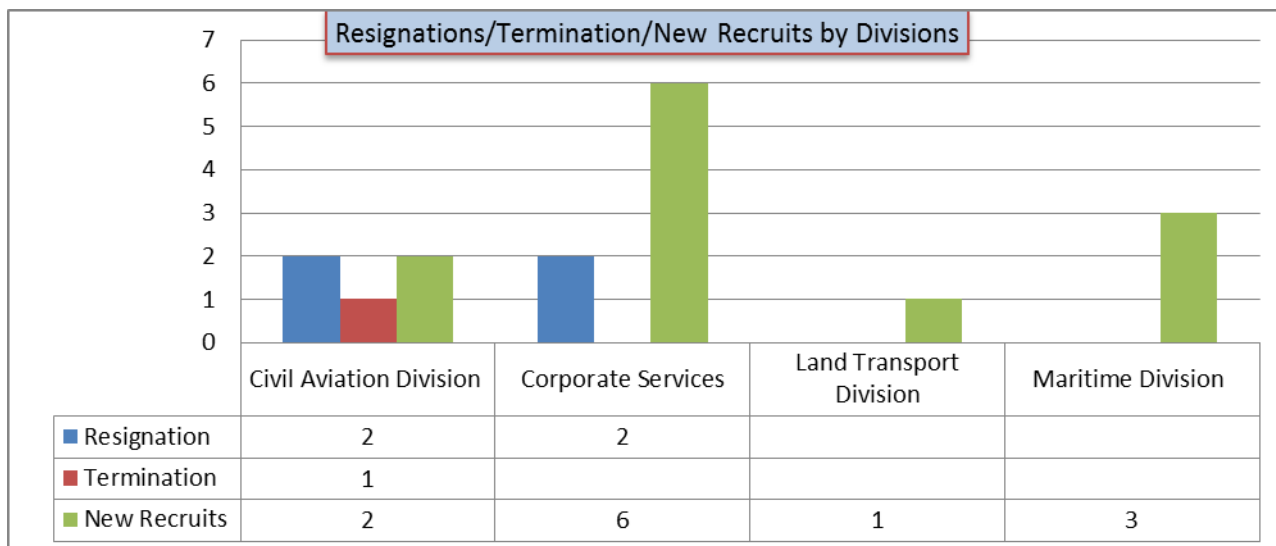


TOTAL STAFF BY GENDER CLASSIFICATION	Females	Males
CLERKS A2-A5	7	11
OFFICERS A6-A10	5	6
SENIORS A11-A14	4	8
MIDDLE MANAGEMENT SPGR2	3	6
SENIOR MANAGEMENT C1-CEO2	2	4



The above graph shows that males dominate females over all job levels i.e Clerical, Senior Executive management as well as middle management level.





**Achievements:**

In terms of skills upgrading & development, the Internal Auditor, Ms FetuSakaria has successfully completed undertaking MBA studies in USP Fiji in 2009 and Principal Surveyor, Tapaga Collins has successfully completed his studies in USP Alafua Campus undertaking Certificate in Management Studies in December 2009.

**MINISTRY OF WORKS, TRANSPORT & INFRASTRUCTURE**  
**STATEMENT OF EXPENDITURE BY OUTPUTS**  
**FOR THE FINANCIAL YEAR ENDED 30 JUNE 2010**

	<i>Outputs</i>	<i>Total</i>	<i>Total</i>	<i>%</i>	<i>Balance</i>
	<i>Account Codes</i>	<i>Actuals</i>	<i>Estimates+Supplementary</i>		<i>(OVER)/UNDER</i>
<b>1.0</b>	<b><i>Policy Advice to the Minister</i></b>				
	<i>Capital</i>	130,500.00	136,570.00	96%	6,070
	<i>Operating</i>	80,343.00	95,386.00	84%	15,043
	<i>Personnel</i>	166,169.00	173,622.00	96%	7,453
	<b>TOTAL</b>	<b>377,012.00</b>	<b>405,578.00</b>	<b>93%</b>	<b>28,566</b>
<b>2.0</b>	<b><i>Ministerial Support</i></b>				
	<i>Operating</i>	105,650.00	122,503	86%	16,853
	<i>Personnel</i>	91,955.00	81,683	113%	(10,272)
	<b>TOTAL</b>	<b>197,605.00</b>	<b>204,186</b>	<b>97%</b>	<b>6,581</b>
<b>3.0</b>	<b><i>Civil Aviation Policy Admin. &amp; Regulation</i></b>				-
	<i>Operating</i>	61,385.00	67,136	91%	5,751
	<i>Personnel</i>	245,398.00	251,398	98%	6,000
	<b>TOTAL</b>	<b>306,783.00</b>	<b>318,534</b>	<b>96%</b>	<b>11,751</b>
<b>4.0</b>	<b><i>Maritime Policy Admin. &amp; Regulation</i></b>				-
	<i>Operating</i>	58,879.00	60,810	97%	1,931
	<i>Personnel</i>	428,637.00	460,977	93%	32,340
	<b>TOTAL</b>	<b>487,516.00</b>	<b>521,787</b>	<b>93%</b>	<b>34,271</b>
					-
<b>5.0</b>	<b><i>Land Transport Services</i></b>				
	<i>Capital</i>	21,739.00	25,000	87%	3,261
	<i>Operating</i>	23,256.00	26,800	87%	3,544
	<i>Personnel</i>	115,811.00	125,340	92%	9,529
	<b>TOTAL</b>	<b>160,806.00</b>	<b>177,140</b>	<b>91%</b>	<b>16,334</b>
<b>6.0</b>	<b><i>Policy and Planning</i></b>				-
	<i>Capital</i>	88,217.00	97,500	90%	9,283
	<i>Operating</i>	17,418.00	18,948	92%	1,530
	<i>Personnel</i>	9,324.00	9,924	94%	600

	<b>TOTAL</b>	<b>114,959.00</b>	<b>126,372</b>	<b>91%</b>	<b>11,413</b>
8.0	<b>Asset Management - Building</b>				-
	<i>Operating</i>	931,721.00	947,666	98%	15,945
	<i>Personnel</i>	326,149.00	336,105	97%	9,956
	<b>TOTAL</b>	<b>1,257,870.00</b>	<b>1,283,771</b>	<b>98%</b>	<b>25,901</b>
99.1	<b>Central Services Unit</b>				-
	<i>Capital</i>	-	-		-
	<i>Operating</i>	323,836.00	323,651	100%	(185)
	<i>Personnel</i>	433,921.00	440,219	99%	6,298
	<b>TOTAL</b>	<b>757,757.00</b>	<b>763,870</b>	<b>99%</b>	<b>6,113</b>
	<b>Total Departmental Outputs:</b>	<b>3,660,308.00</b>	<b>3,801,238.00</b>	<b>96%</b>	<b>140,930.00</b>
	<b><u>THIRD PARTY OUTPUTS</u></b>				
	<i>Samoa Water Authority</i>	3,447,037.00	4,236,413.00	81%	789,376
	<i>Electric Power Corporation</i>	2,247,476.00	2,247,476.00	100%	-
	<i>EPC-VAGST Subsidy</i>	7,841,569.00	7,841,569	100%	-
	<i>Land Transport Authority</i>	43,388,787.24	46,440,000	93%	3,051,213
	<b>Total Third Party Outputs:</b>	<b>56,924,868.83</b>	<b>60,765,458.00</b>	<b>94%</b>	<b>3,840,589</b>
	<b><u>TRANSACTION ON BEHALF OF STATE</u></b>				
	<i>International Civil Aviation</i>	114,392.00	115,000	99%	608
	<i>International Maritime Organization</i>	19,968.00	23,000	87%	3,032
	<i>Pacific Aviation Safety Office</i>	30,200.00	30,200	100%	-
	<i>Rents and Leases</i>	50,560.00	50,560	100%	-
	<i>IDA/Infrastructure Asset Management</i>	-33,495.57	-	0%	33,495.57
	<i>New Government Building</i>	22,271.00	33,820	66%	11,549

<i>Land Compensation</i>	982,699.13	4,016,300	98%	3,033,601
<i>Grant for Land Transport Authority</i>	6,864.91	-	0%	-6,864.91
<i>Long Service Entitlement for LTA Staff</i>	194,985.00	198,326	98%	3,341
<i>VAGST Output Tax</i>	839,445.00	263,413	319%	(576,032)
<i>Total Transaction On Behalf of State:</i>	2,227,889.01	4,730,619.00	47%	2,502,730
<b>TOTAL</b>	<b>62,618,081.58</b>	<b>69,297,316.00</b>	<b>91%</b>	<b>6,484,249</b>

**STATEMENT OF EXPENDITURE BY OUTPUT  
FOR THE FINANCIAL YEAR ENDED 30 JUNE 2010**

	<b>Total Actuals</b>	<b>Total Estimate</b>
<b>Policy Advice to the Minister</b>	377,012.00	405,578.00
<b>Ministerial Support</b>	197,605.00	204,186
<b>Civil Aviation Policy Admin. &amp; Regulation</b>	306,783.00	318,534
<b>Maritime Policy Admin. &amp; Regulation</b>	487,516.00	521,787
<b>Land Transport Services</b>	160,806.00	177,140
<b>Policy and Planning</b>	114,959.00	126,372
<b>Asset Management - Building</b>	1,257,870.00	1,283,771
<b>Central Services Unit</b>	757,757.00	763,870
<b>Total</b>	<b>3,660,308.00</b>	<b>3,801,238.00</b>

**MINISTRY OF WORKS, TRANSPORT & INFRASTRUCTURE**  
**STATEMENT OF RECEIPTS BY OUTPUTS**  
**FOR THE FIIAL YEAR ENDED 30 JUNE 2010**

	Actuals	BUDGET	%	Balance OVER/(UNDER)
Civil Aviation Policy Admin. & Regulation	(9,100.00)	(8,000.00)	114%	1,100
Maritime Policy Admin. & Regulation	(157,277.00)	(130,046.00)	121%	27,231
Asset Management - Building	(378,137.00)	(446,640.00)	85%	(68,503)
<b>TOTAL COST RECOVERIES</b>	(544,514.00)	(584,686.00)	93%	(40,172)
<b>UPPER AIRSPACE RECEIPTS</b>	(740,599.00)	(785,000)	94%	(44,401)
<b>TOTAL REVENUE</b>	<b>(1,285,113.00)</b>	<b>(1,369,686)</b>	<b>94%</b>	<b>(84,573)</b>